

Rosenthal Project

UPDATE 5

We're growing a new *car* park

February 2018

Welcome to our February Project Update

Keeping you up to date with the Rosenthal Project is important to us. The full site is now under construction with the hoarding extending around the full perimeter of the former Rosenthal Avenue Car Park.

We are working hard to minimise construction impacts on residents and business and are more than happy to answer any questions or concerns you may have.



Behind the Hoarding

Since the commencement of the Rosenthal Project on 9 September, 31,710 tonnes of excavated material has been removed from site. We recently completed all 145 piles required for the boundary retaining wall and foundation.

Once the project is completed 162,000 tonnes of material will have been removed – roughly the equivalent of 36 Olympic Swimming Pools.

This week we completed the installation of a gantry to Birdwood Lane.

The next step is the installation of elevated site sheds on top of the gantry which will provide machinery access to the full site for the remainder of the excavation works.

Business Parking

Council's 3 Month Business Parking Permit continues with recipients of the random draw parking in designated business parking spaces in Sera Street (behind Coles).

Entries for the draw are now open until Monday 5 March, and new permits are valid from Monday 12 March. Each business is allowed up to five entries per draw and there is a limit of one entry per staff member.

Further details are available at www.lanecove.nsw.gov.au/rp including the conditions of the permit and eligibility.

Did you know?

The Rosenthal Project is well underway, with approximately 19 percent of the excavation completed. The completion of excavation is expected in mid 2018.

Meet ADCO

Meet John !

John Gabriel is the Community Liaison Officer for the Rosenthal Project- John is the one who answers the Project Hotline, distributes local information and generally helps to answer community questions about the project.

If you have a question about the Project feel free to call 1800 767 368 or drop an email to rosenthalproject@adcoconstruct.com.au.



Contact Us
1800 767 368
rosenthalproject@adcoconstruct.com.au
www.rosenthalproject.com.au

A Lane Cove Council Project
delivered by ADCO Constructions

Rosenthal Project

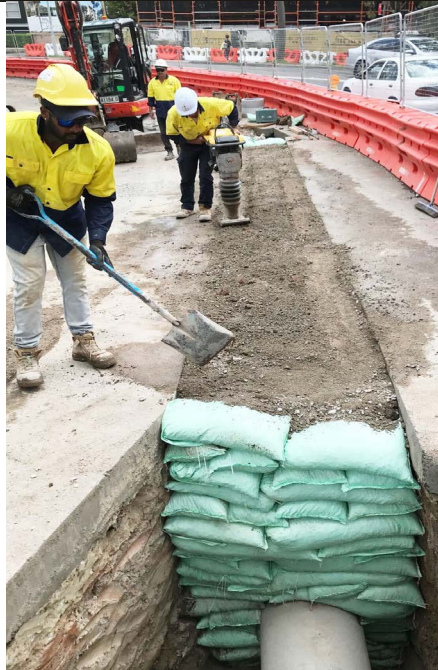
UPDATE 5

We're growing a new *car* park

February 2018

Watch this space

Council will soon commence a community consultation process to determine a permanent name for the project. The current "Rosenthal Project" is a temporary construction phase name. This will be phased out toward the end of the construction period when the new name will take over. Our next Project Update will include details about how you can propose a permanent name for the project. Your suggestions will be welcome via the "Have Your Say" section of Council's website. The consultation will commence during the month of March.



What's happening in construction?

We are working hard to minimise construction impacts on residents and businesses, and are more than happy to answer any questions or concerns you may have in the lead up to construction.

With the completion of piling we can now commence works on the shoring wall. This will involve installing over 380 temporary anchors, installing steel reinforcement and sprayed concrete which will retain the earth whilst excavation continues.

Construction Activities

February 2018

Installation of a gantry and site sheds to Birdwood Lane

March/April 2018

Excavation continues

Shoring wall works commence

Mid 2018

Excavation completed

Mid 2020 Project completion

Did you know you can sign up for Project Updates on our website?

Do you live or work in the immediate vicinity of the Rosenthal Project site?

You may like to check your building's emergency evacuation plan to see if you need to consider an alternate location for emergency evacuation points until the project is completed.

Did you know that the Loading Zone in Birdwood Lane has moved to the rear of the Commonwealth Bank building? The two spaces previously available on the western side have been relocated further up the laneway to make sure that access to loading zones is still maintained along the lane way.



Rosenthal Hoarding Facelift

We recently beautified our construction hoarding along Birdwood and Rosenthal Avenues with a bespoke, exciting design. The artwork features a series of sketches highlighting the types of activities that the Rosenthal Project will provide for the community. The end result will be a vibrant new public community space, with additional car parking capacity to assist with village centre growth. The Council-funded project will transform the previous 170 surface level car park to provide:

- A state of the art public open space including parks, performance space and BBQ facilities at ground level
- Two anchor tenants, ALDI and Coles, situated under the public open space
- Four underground levels providing 500 car parking spaces
- Motorcycle and bicycle parking including end of trip facilities
- A pedestrian bridge over Rosenthal Avenue, including lift and stairs
- Upgrades to pavements and street furniture
- An improved trafficable shared pedestrian zone for Birdwood Lane to provide level access to Birdwood Lane and Lane Cove Plaza



Contact Us
1800 767 368
rosenthalproject@adcoconstruct.com.au
www.rosenthalproject.com.au

A Lane Cove Council Project
delivered by ADCO Constructions