

# Rosenthal Project

NOTIFICATION OF  
CONSTRUCTION  
ACTIVITIES No:72

We're growing a new *car* park...

23 July 2019

## Dear Resident/Business Owner

This notice is to inform you that ADCO will be working in Rosenthal Avenue for the dismantle and craneage of a concrete tower boom, co-ordination of deliveries, and for the operation of construction vehicles during the excavation of the site's loading dock. A contra-flow and detours will be set-up on Rosenthal Avenue in order to accommodate for these works.

### What we are doing

- Dismantle and craneage of a concrete tower boom.
- Excavation of the site's loading dock area.
- Delivery of equipment and materials.
- Operation of construction vehicles and tower crane.

### When

- Works will commence **Wednesday 24 to Friday 26 July 2019**.
- Works will take place during the hours of 7:00am - 5:00pm.
- Please note that the duration of works may change in the event of inclement weather or for other unforeseeable circumstances outside of our control.

### What to be aware of

#### Traffic and Pedestrian Changes

- A truck will be set-up on Rosenthal Avenue in order to accommodate for the collection of the concrete boom, and delivery of equipment.
- Traffic will be regulated by appropriate implementation of traffic control measures and will be managed by contra-flow and/or diverted via Finlayson Street/Cox's Lane/Birdwood Avenue.
- Pedestrian access will remain open and managed by traffic control to ensure safe access at all times.

#### Noise

- These works are expected to generate medium levels of noise.

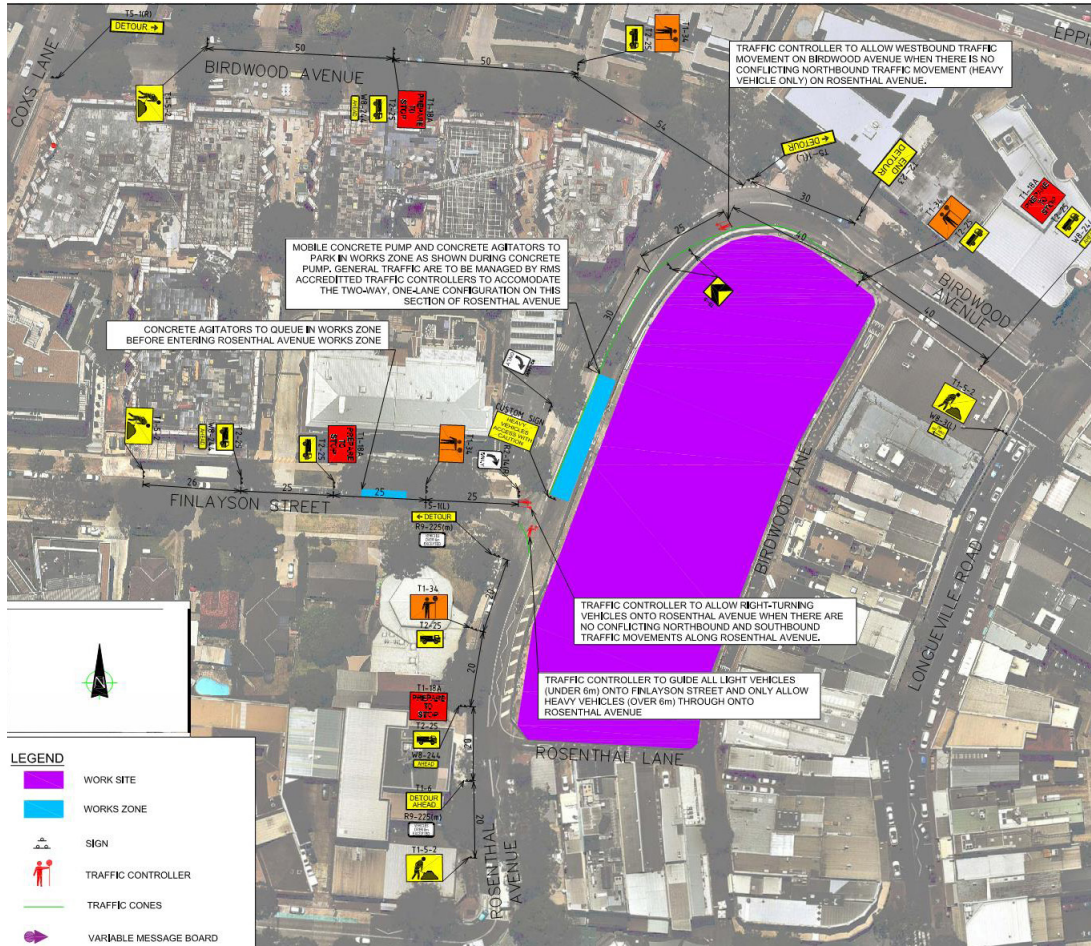
We apologise for any disturbances that may occur as a result of these works.

Please find a map overleaf detailing where the works will be taking place.

# Rosenthal Project

NOTIFICATION OF  
CONSTRUCTION  
ACTIVITIES No:72

We're growing a new *car* park...



Your patience and cooperation are appreciated during this important stage of the project.

If you have any questions about these works or would like more information about the Rosenthal Project, you can call the project hotline on 1800 ROSENTHAL (1800 767 368) or send an email to [rosenthalproject@adcoconstruct.com.au](mailto:rosenthalproject@adcoconstruct.com.au)

Yours faithfully,

*ADCO Community Liaison Manager*  
Rosenthal Project  
P:1800 767 368  
E:[rosenthalproject@adcoconstruct.com.au](mailto:rosenthalproject@adcoconstruct.com.au)