

Rosenthal Project

NOTIFICATION OF
CONSTRUCTION
ACTIVITIES No:73

We're growing a new *car* park...

24 July 2019

Dear Resident/Business Owner

This notice is to inform you that ADCO will be working out of hours in Rosenthal Avenue for the dismantling of the tower crane. The crane removal process will start on Monday 29 July at 5 am till midnight. A contra-flow and detours will be set-up on Rosenthal Avenue in order to accommodate for these works.

What we are doing

- Dismantle and craneage of tower crane sections, cabin, and counterweights.
- Operation of large semi-trailer trucks required to take away all crane parts.
- Operation of construction vehicles, power tools and mobile crane.

When

- Works will commence **Monday 29 July 5:00 am till midnight.**
- Please note that the duration of works may change in the event of inclement weather or for other unforeseeable circumstances outside of our control.

What to be aware of

Traffic and Pedestrian Changes

- A truck and mobile crane will be set-up on Rosenthal Avenue in order to accommodate for the craneage and collection of the tower crane sections.
- Traffic will be regulated by appropriate implementation of traffic control measures and will be managed by contra-flow and/or diverted via Finlayson Street/Cox's Lane/Birdwood Avenue.
- Pedestrian access will remain open and managed by traffic control to ensure safe access at all times.

Noise, vibration, and lighting

- These works are expected to generate medium levels of noise and vibration. Mobile lighting towers will be used for task lighting.

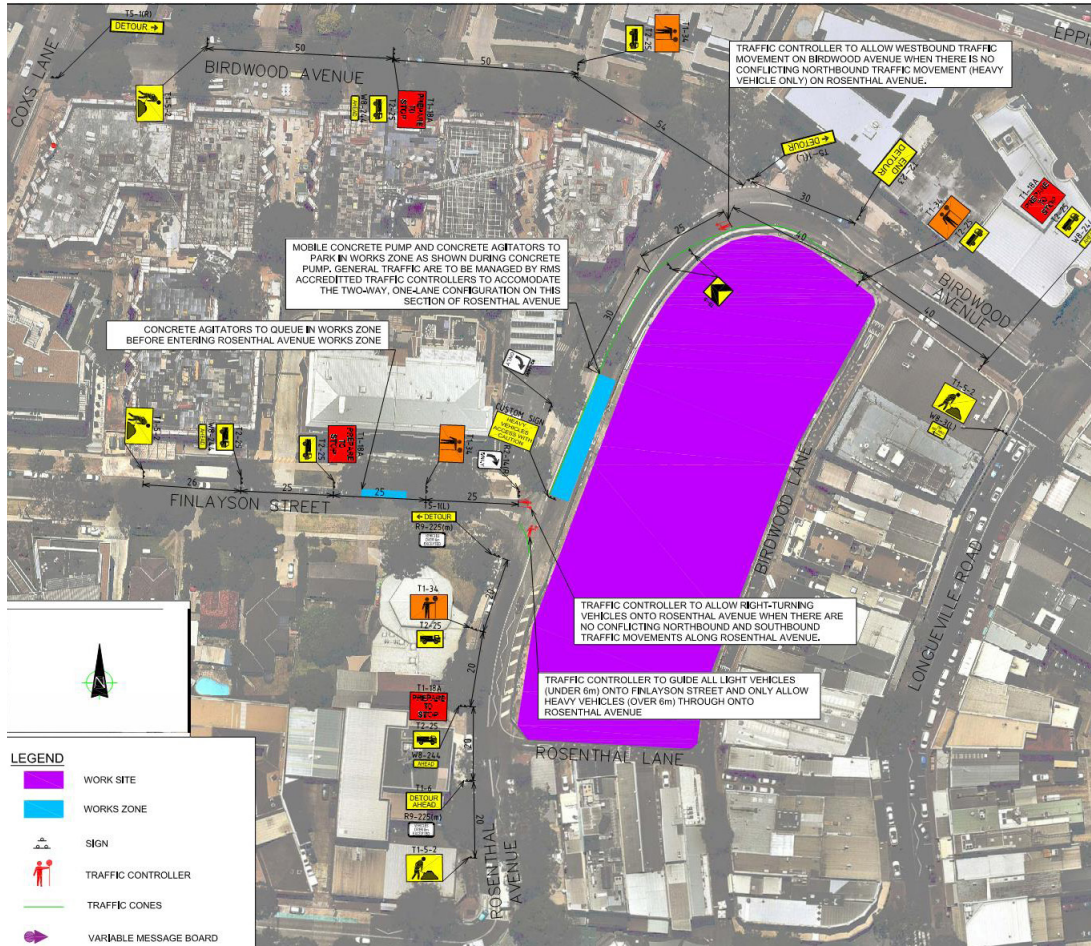
We apologise for any disturbances that may occur as a result of these works.

Please find a map overleaf detailing where the works will be taking place.

Rosenthal Project

NOTIFICATION OF
CONSTRUCTION
ACTIVITIES No:73

We're growing a new *car* park...



Your patience and cooperation are appreciated during this important stage of the project.

If you have any questions about these works or would like more information about the Rosenthal Project, you can call the project hotline on 1800 ROSENTHAL (1800 767 368) or send an email to rosenthalproject@adcoconstruct.com.au

Yours faithfully,

ADCO Community Liaison Manager
Rosenthal Project
P:1800 767 368
E:rosenthalproject@adcoconstruct.com.au